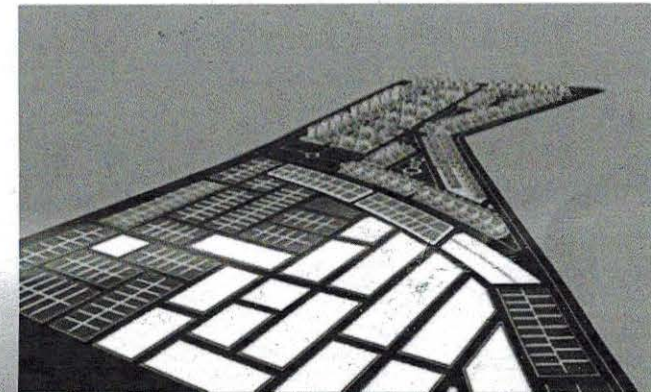
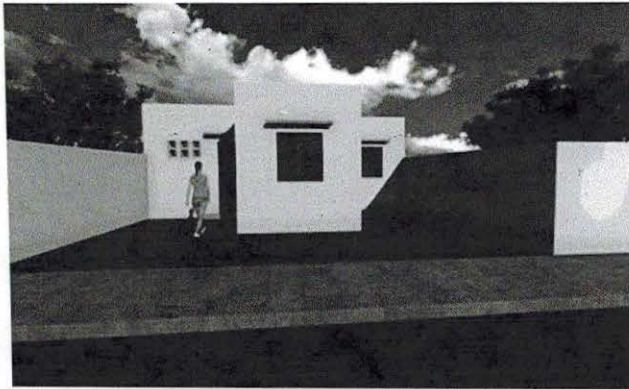


Société Nationale
des Habitations à Loyer Modéré

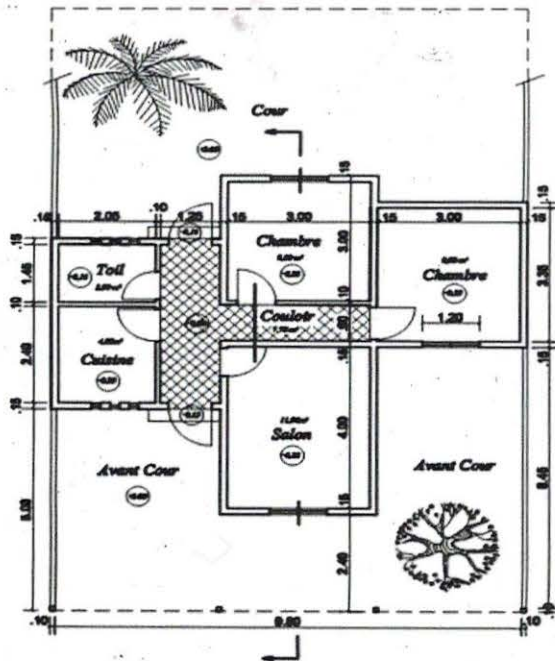
PROGRAMME DE CONSTRUCTION DE 1000 LOGEMENTS A DIAMNIADIC (DAKAR)



LOGEMENT TYPE E3

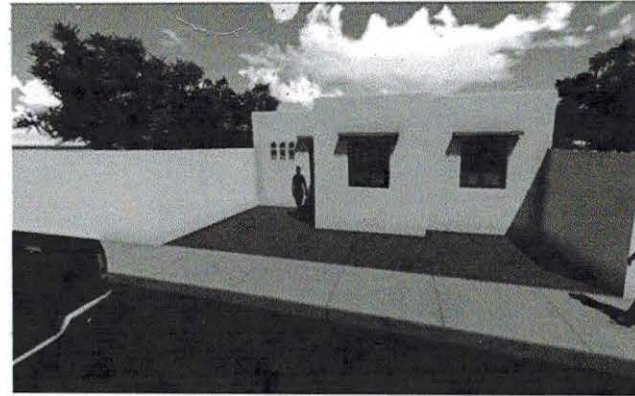


Prix de vente au comptant : 13 000 000 F CFA
Apport Minimum : 3 000 000 F CFA
(PRIX PREVISIONNEL)

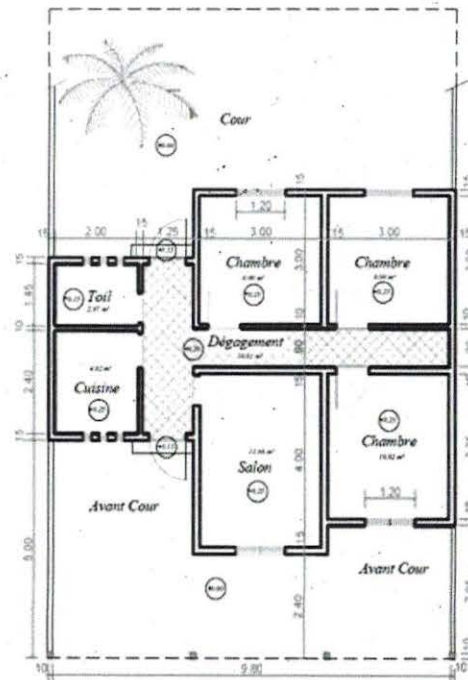


Surface parcellaire = 150,00 m²

LOGEMENT TYPE E4



Prix de vente au comptant : 15 000 000 F CFA
Apport Minimum : 4 000 000 F CFA
(PRIX PREVISIONNEL)



Surface parcellaire = 150,00 m²

1er phase 565 logements:
240 Logements Type E3
216 Logements Type E4
83 Logements Type MS4
26 Logements Type MS5